

Anyone can do 30° ...

We can
do 10°, too



fiXflat

The revolutionary mounting system for flat roofs

Efficient roof surface utilisation, compact handling and flexible application for flat roofs, even for those with limited load-bearing capacity.

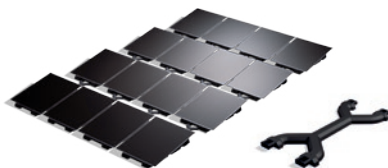
Many flat roofs that might seem optimal for a solar power installation turn out to be unsuitable on closer inspection due to their insufficient load-bearing capacity. With its fiXflat system, Inventux is now offering a groundbreaking mounting solution for flat roofs with low load-bearing reserves.

Furthermore, fiXflat is characterised by its user-friendly design. All components necessary for installation are already integrated, ensuring certainty in planning and saving of costs. fiXflat offers two flexible installation types, for efficient utilisation of the roof surface – an option no other flat roof solution can yet provide.

The fiXflat concept at a glance

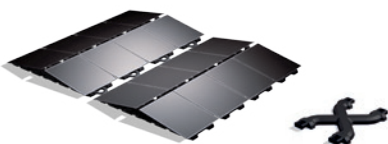
Two installation types

To achieve optimal utilisation of flat roof surfaces, fiXflat offers two mounting types: Inventux solar modules can be mounted either in the classic form in rows (Simplex Mounting) or optimised to use the roof surface efficiently with a dual configuration (Duplex Mounting).



Simplex Mounting – for maximum energy yield/kW_p

- Focus: optimal orientation towards the sun
- Up to 7 % more yield/kW_p compared to Duplex Mounting
- approx. 14 m²/kW_p



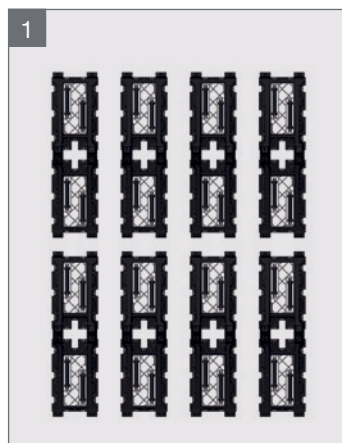
Duplex Mounting – for maximum number of modules/m²

- Focus: optimal use of the roof surface
- Up to 20 % more module surface compared to conventional flat roof solutions
- < 12 m²/kW_p

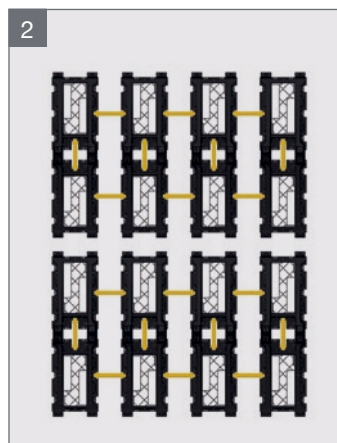
We can do sun

Where other mounting systems quit, we're just getting started. **Fast, flexible, secure.**

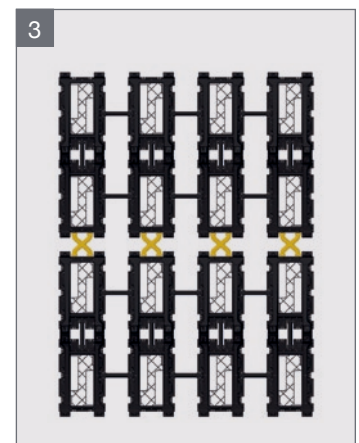
fiXflat mounting system – the Inventux 1-2-3 principle



1. Position fiXflat pallets



2. Connect fiXflat pallets



3. Connect fiXflat rows

<ul style="list-style-type: none"> ■ Low load, installation without additional ballast to secure position 	Low additional weight on the roof, thus also suitable for roofs with low load-bearing capacities
<ul style="list-style-type: none"> ■ No roof penetration required 	No mechanical connection with the building's existing structure
<ul style="list-style-type: none"> ■ Homogeneous load distribution on the roof due to low pressure load (15 kg/m²) 	Even, lateral load distribution helps to protect and maintain the roof
<ul style="list-style-type: none"> ■ Tool-free installation 	Faster installation without screws due to the intelligent connection system
<ul style="list-style-type: none"> ■ 1 module = 1 fiXflat pallet 	Easy and fool-proof design of the mounting system
<ul style="list-style-type: none"> ■ Highly flexible planning and installation 	Separate installation of mounting system and modules possible, no pre-assembly
<ul style="list-style-type: none"> ■ UV-resistant and extremely durable material 	Exposure to solar irradiation and natural wear and tear does not lead to embrittlement or cracking of material
<ul style="list-style-type: none"> ■ Environmentally-friendly mounting system due to the use of recycled synthetic material 	Easy recycling as material can be reprocessed
<ul style="list-style-type: none"> ■ Possibility of stacking up to 22 fiXflat pallets on top of each other due to their low weight 	Space-saving transport, low logistics costs and easy handling at the construction site